

## Grid system presizing

<b>Geographical Site</b>	<b>Land Mark 81</b>	<b>Country</b> <b>Vietnam</b>
<b>Situation</b>	Latitude 10.80° N	Longitude 106.72° E
Time defined as	Legal Time Time zone UT+7	Altitude 0 m
<b>Collector Plane Orientation</b>	Tilt 30°	Azimuth 0°

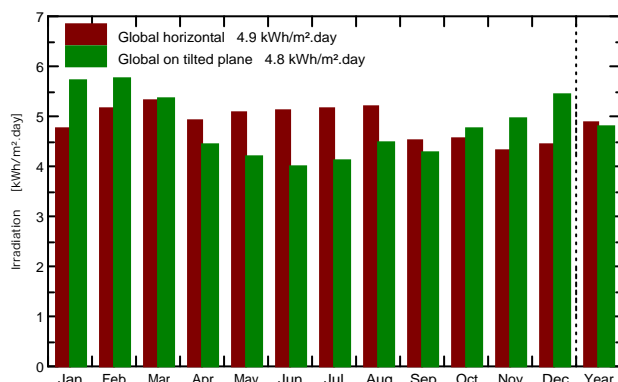
### PV-field installation main features

Module type	Standard
Technology	Polycrystalline cells
Mounting method	Facade or tilt roof
Back ventilation properties	Ventilated

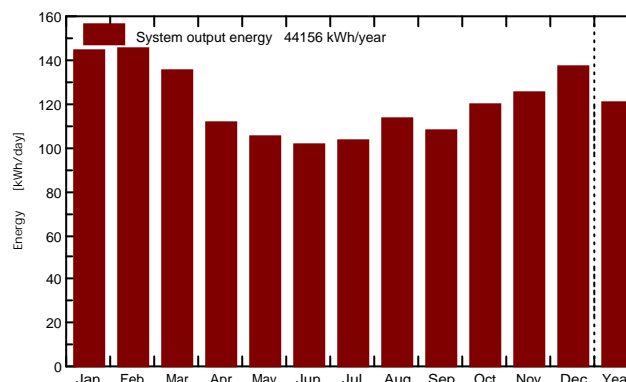
### System characteristics and pre-sizing evaluation

PV-field nominal power (STC)	Pnom	30.0 kWp		
Collector area	Acoll	200 m <sup>2</sup>		
Annual energy yield	Eyear	44.2 MWh	Specific yield	1472 kWh/kWp
Economic gross evaluation	Investment	94947 EUR	Energy price	0.21 EUR/kWh

#### Meteo and incident energy



#### System output



	Gl. horiz. kWh/m².day	Coll. Plane kWh/m².day	System output kWh/day	System output kWh
Jan.	4.76	5.74	144.6	4484
Feb.	5.18	5.77	145.4	4072
Mar.	5.32	5.37	135.5	4200
Apr.	4.94	4.44	112.0	3360
May	5.10	4.19	105.8	3278
June	5.13	4.01	101.2	3037
July	5.18	4.11	103.7	3216
Aug.	5.21	4.49	113.2	3510
Sep.	4.51	4.30	108.5	3255
Oct.	4.55	4.77	120.3	3730
Nov.	4.33	4.96	125.1	3754
Dec.	4.45	5.45	137.5	4261
Year	4.89	4.80	121.0	44156